

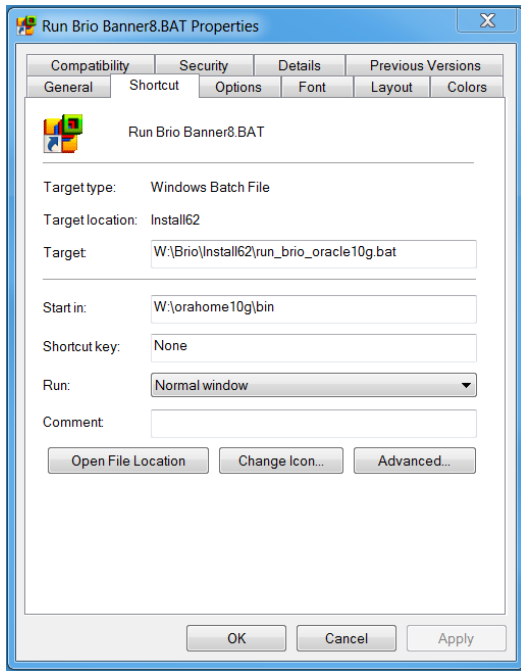
One Time Brio Set-up

Prerequisite(s): Banner sprod account
Brio installed on computer
Access to O:\Interdepartmental\Dashboard-Reports (read-only)

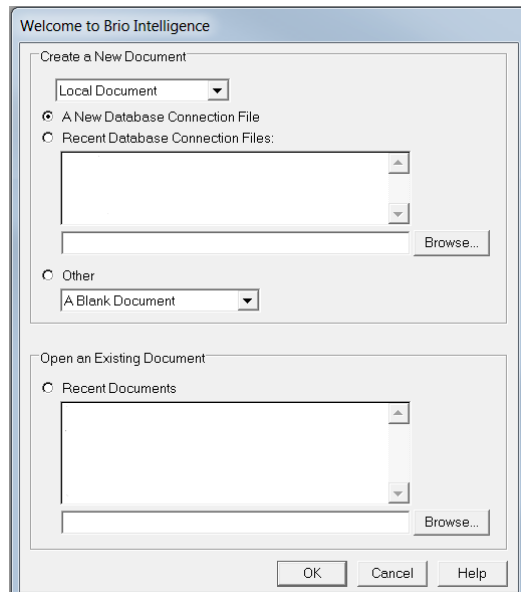
1 One Time Set-up



If Brio is installed on your computer, you should have a short-cut on your desktop. Right click the short-cut, and select 'Properties'.

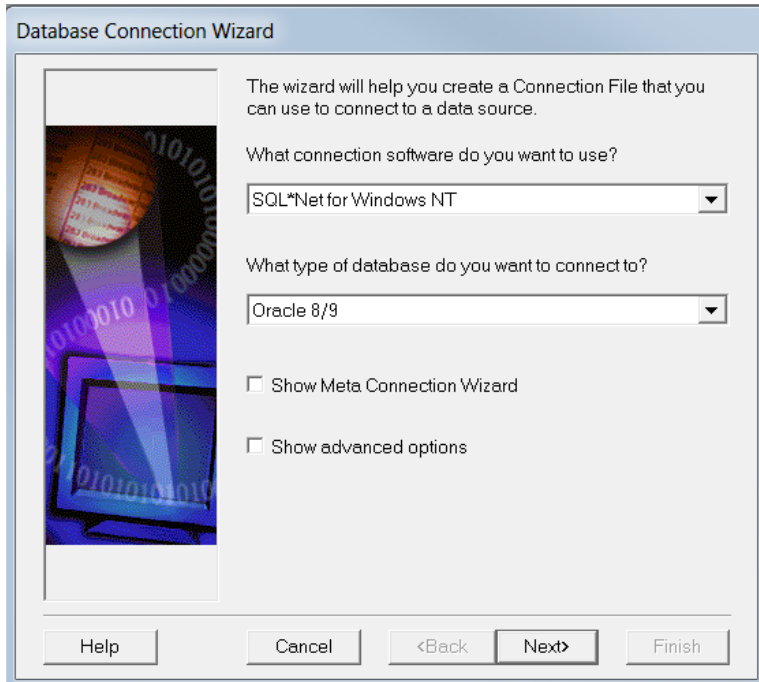


'Target' field: W:\Brio\Install62\run_brio_oracle10g.bat
'Start in' field: W:\orahome10g\bin
Click OK



Double-click the Brio icon.
Select 'A New Database Connection File'.
Click OK.

One Time Brio Set-up



The wizard will help you create a Connection File that you can use to connect to a data source.

What connection software do you want to use?

SQL*Net for Windows NT

What type of database do you want to connect to?

Oracle 8/9

Show Meta Connection Wizard

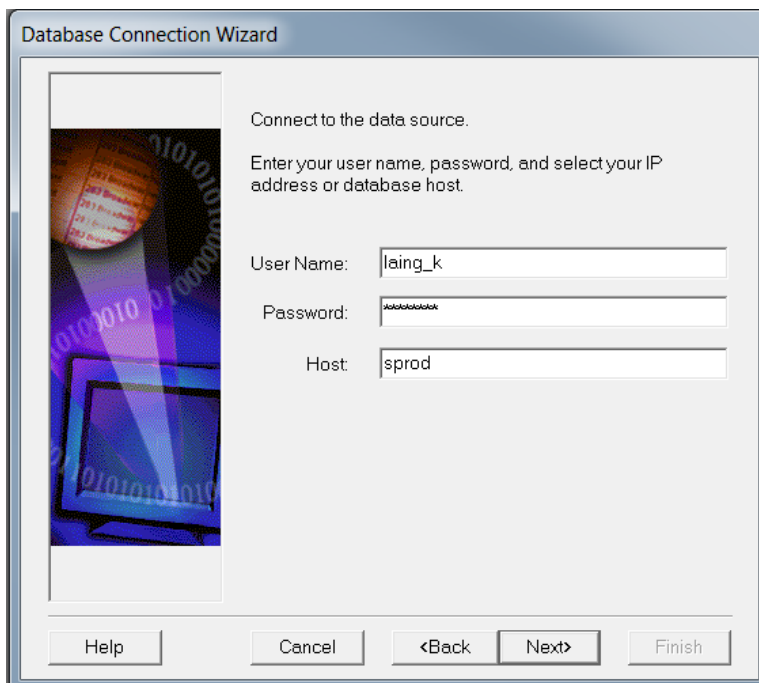
Show advanced options

Help Cancel <Back Next> Finish

Select 'SQL*Net for Windows NT' as the connection software.

Select Oracle 8/9 as the type of database.

Click Next>



Connect to the data source.

Enter your user name, password, and select your IP address or database host.

User Name: laing_k

Password: ██████████

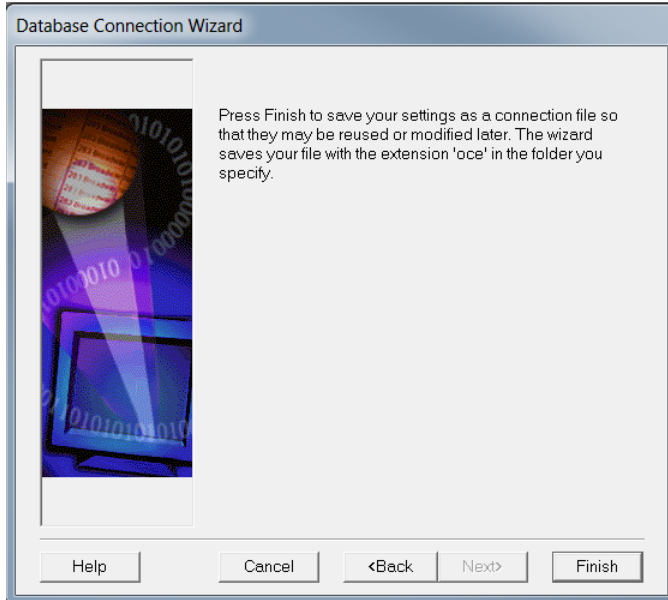
Host: sprod

Help Cancel <Back Next> Finish

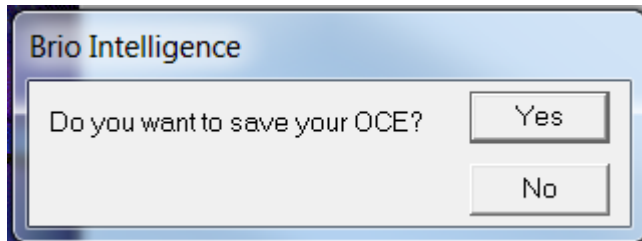
Enter Banner sprod User Name, Password and for Host enter: sprod.

Click Next>

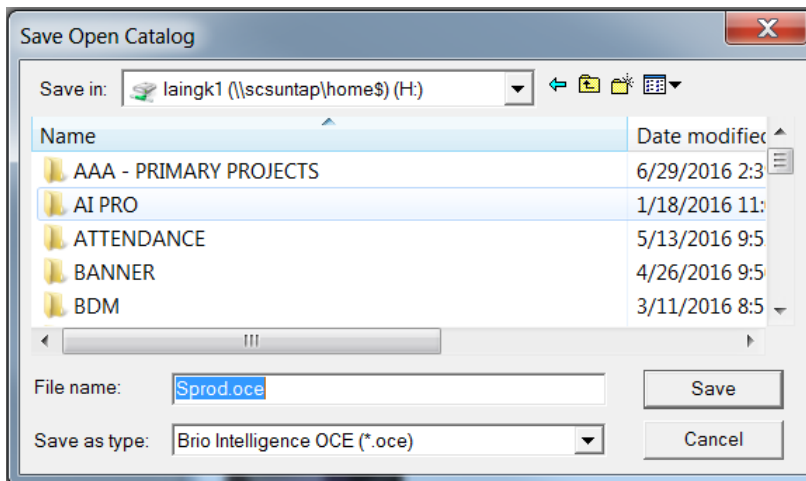
One Time Brio Set-up



Click 'Finish'

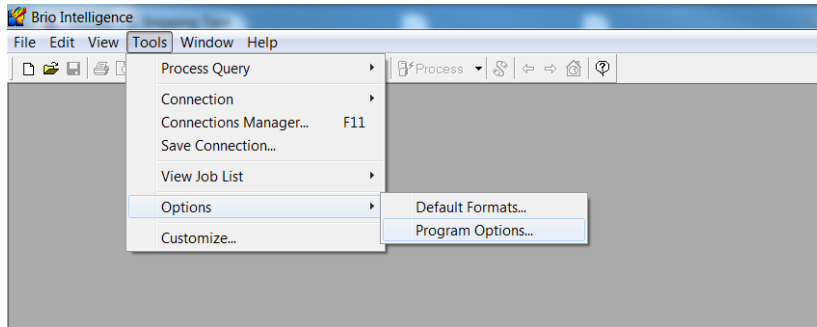


When prompted 'Do you want to save your OCE?' Click 'Yes'.

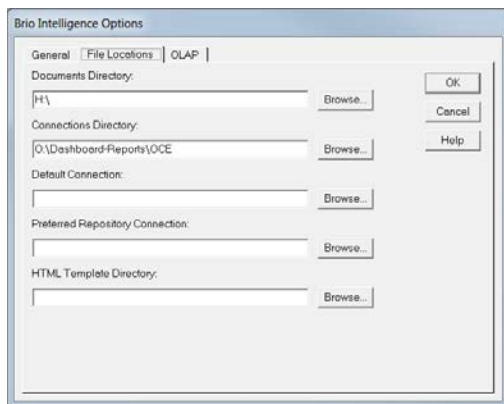


Navigate to your personal H drive.
Enter File name: Sprod.oce
Click 'Save'

One Time Brio Set-up



Go to the Tools menu → Options → Program Options



On the File Locations tab:

Documents Directory: H:\

Connections Directory: O:\Dashboard-Reports\OCE

Click OK

Close out of Brio completely.